

Holder for conductivity measurement sensor *DipFit W CLA 111*

Immersion and process holder for open and closed tanks with DN 100 flange



*DipFit W with
DN 100 flange*



*DipFit W with
adjustable flange*

Areas of application

The immersion and process holder DipFit W CLA 111 is intended for universal use in water or wastewater treatment plants and in process applications. The Chemoclean system for chemical cleaning of measuring sensors can be integrated without the need to convert the holder assembly.

Accessories for mounting and cleaning are available:

- Spray head
- Mounting frame
- Pendulum frame
- Retrofit kit for pendulum frame mounting

Benefits at a glance

- Made of environmentally compatible polypropylene material
- Flexible immersion depth due to adjustable flange; additional bayonet locking mechanism assures easy installation and removal of holder
- Simple installation and removal of measuring sensor due to bayonet lock mounting system
- One measuring sensor mounting position suitable for CLS 21 or CLS 50 conductivity sensor with integrated Pt 100
- Reduced condensation of water due to built-in Goretex® filter
- All accessories can be retrofitted without the need to convert the holder assembly

Endress + Hauser

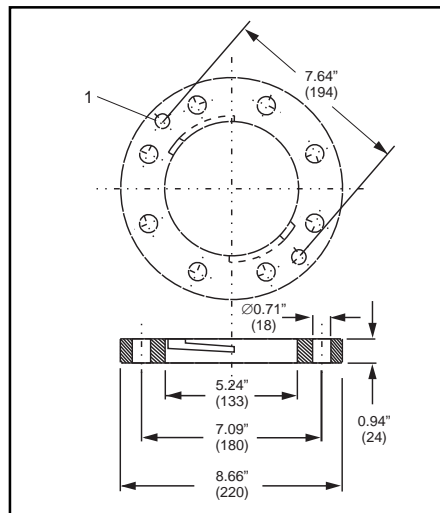
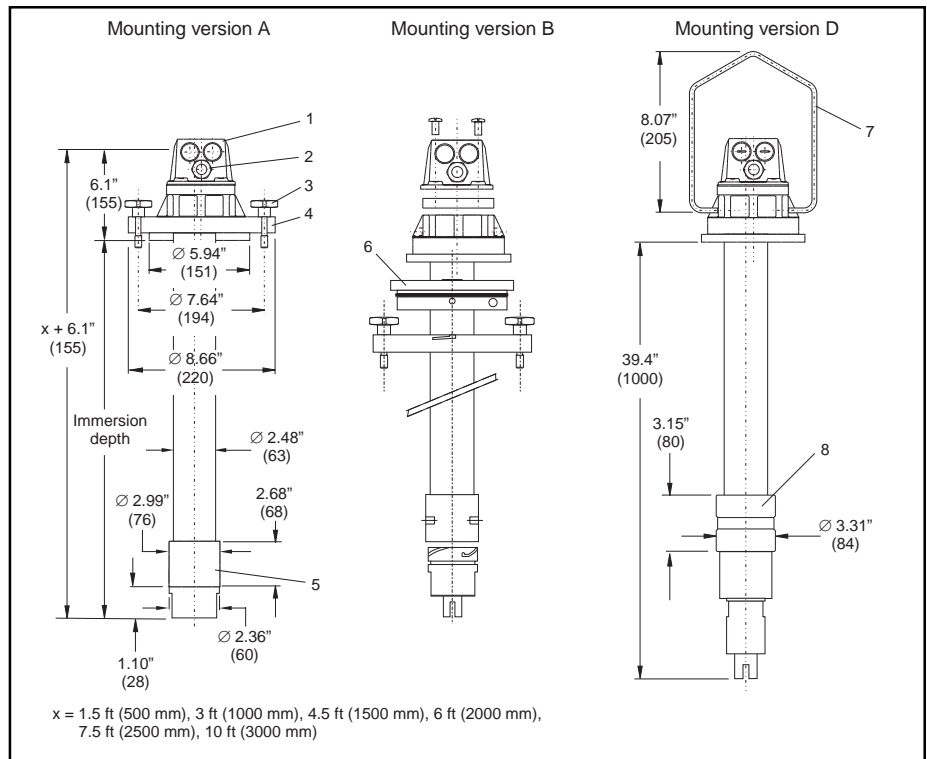
The Power of Know How



Holder types and mounting versions

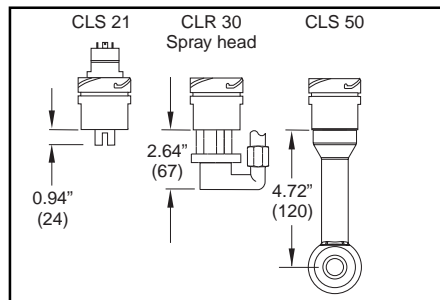
CLA 111 mounting versions A, B, and D

- 1 Assembly head with integrated cable connection terminals
- 2 Pg 13.5 cable entry
- 3 Star handle screws
- 4 DN 100 flange
- 5 Measuring sensor holder
- 6 Adapter for adjustable flange
- 7 Suspension bracket
- 8 Weight (half shells)



DN 100 flange for mounting versions A and B

- 1 Through hole for captive star handle screws with loss protection



Measuring sensor CLS 21, CLS 50 and spray head CLR 30 (for CLS 21) in the measuring sensor holder. Dimensions are extended lengths when threaded into holder.

The CLA 111 holder can be mounted using a standard DN 100 flange (mounting version A). Additional captive star handle screws allow attachment to a mounting frame for convenient installation on basin or channel walls.

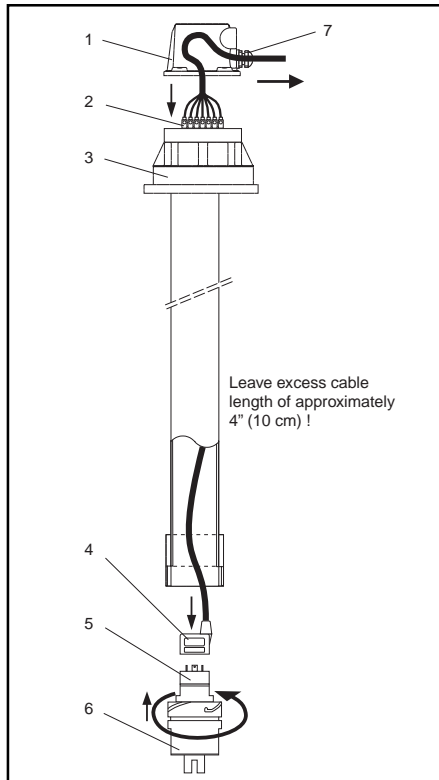
The adjustable flange (mounting version B) can be used to adapt the immersion depth to local conditions. The adapter for the adjustable flange is firmly attached in the desired position on the immersion tube. The bayonet lock integrated on the flange allows easy installation and removal of the holder without having to dismantle the flange.

The suspended version (mounting version D) can be installed in immersion tanks using the assembly holder CYH 101. With a suspension chain, the immersion depth can be varied.

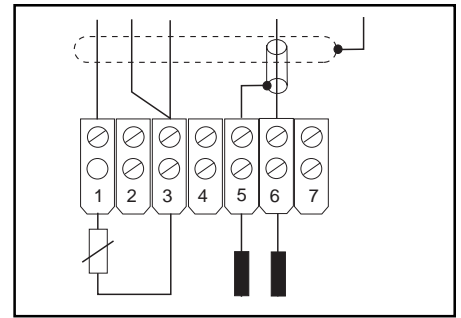
Holder types are designed for sensors with G 1 or G 3/4 BSP thread, e.g. CLS 21 and CLS 50.

Electrical connection

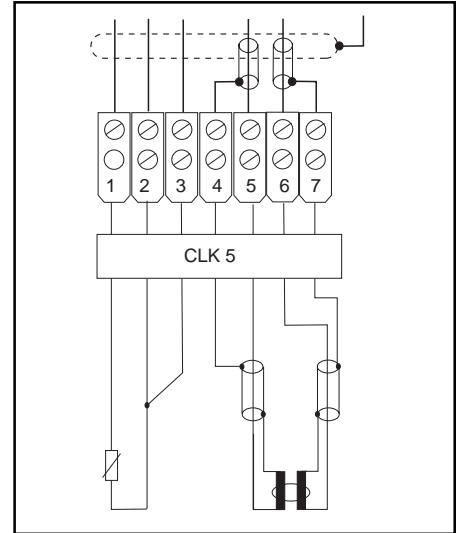
- Measuring cable connection*
- 1 Holder head cover
 - 2 Terminals
 - 3 Holder head
 - 4 Measuring cable socket
 - 5 Conductivity measuring sensor
 - 6 Measuring sensor holder
 - 7 Pg cable gland



The right-angle connector (CLS 21) is replaced by the supplied measuring sensor cable. The cable end is connected to the terminals in the holder head.



CLS 21 sensor connection

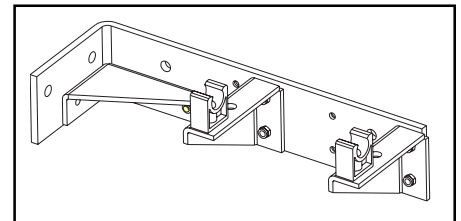


CLS 50 sensor connection

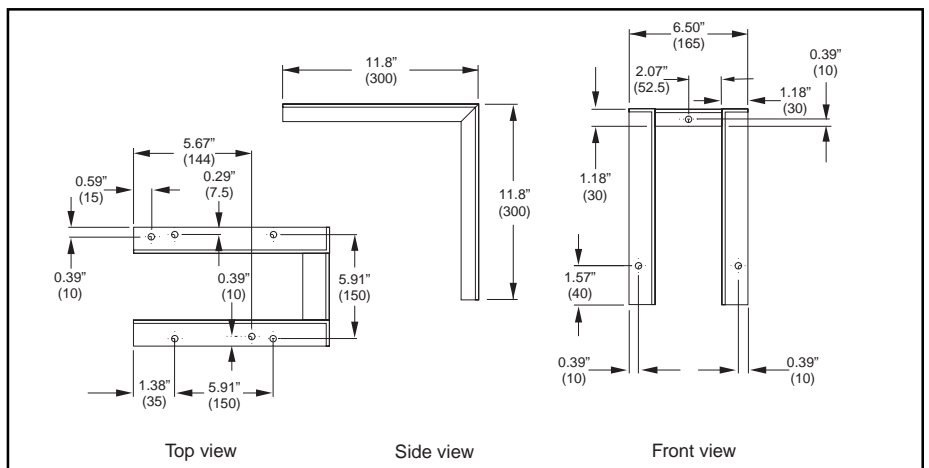
Accessories



CLR 30 spray head for CLS 21 sensor



*Pendulum frame, 304 SS
Order Number: 50080196
Retrofit kit for mounting on pendulum frame
Order Number: 50087873*



Mounting frame for basin or channel walls (mounting versions A and B), 304 SS.

Order Number: 50066561

Technical data

Mounting type

Version A	DN 100 flange, with additional captive star handle screws
Version B	DN 100 adjustable flange
Version D	Suspension bracket, 316Ti SS

Suitable measuring sensors

CLS 21	Refer to Technical Information TI 085C/24/ae
CLS 50	Refer to Technical Information TI 182C/24/ae

Wetted parts

Measuring sensor holder	PP-GF 20
Immersion tube	PP
O-ring	EPDM

Operating pressure / temperature

All mounting versions	Unpressurized, 176°F (80°C)
-----------------------	-----------------------------

Mechanical data

Cable gland	2 x Pg 16, 1 x Pg 13.5
Immersion depth	Standard: 3 ft, 6 ft (1000 mm, 2000 mm) Refer to order code below for other immersion lengths
Required counter flange	DN 100
Weight	Approximately 8.8 lb (4 kg)

Ordering information

Immersion holder DipFit W CLA 111

CLA 111 - 1 2 3

- 1 Length of assembly
 - 0 3 ft (1000 mm)
 - 1 6 ft (2000 mm)
 - 3 1.5 ft (500 mm)
 - 4 5 ft (1500 mm)
 - 5 8 ft (2500 mm)
 - 6 10 ft (3000 mm)
- 2 Material
 - 0 PP, G 1 threaded, with EPDM o-rings (e.g. CLS21-C1E4A)
 - 1 PP, G 3/4 threaded, with EPDM o-rings (e.g. CLS 50-x1xx)
- 3 Mounting version
 - A DN 100 flange, PP, non-pressurized
 - B DN 100 adjustable flange, PP, non-pressurized
 - C Suspension bracket, 316 Ti SS, up to 58 psi (4 bar)
 - D Mounting bracket, 316 SS
 - F Adapted for pendulum frame mounting

For application and selection assistance,
in the U.S. call 888-ENDRESS

For total support of your installed base, 24 hours
a day, in the U.S. call 800-642-8737

Visit us on our web site, www.us.endress.com

United States

Endress+Hauser, Inc.
2350 Endress Place
Greenwood, IN 46143
Phone: (317) 535-7138
888-ENDRESS
FAX: (317) 535-8498

Canada

Endress+Hauser
Canada Ltd.
1440 Graham's Lane
Unit 1, Burlington
ON, L7S 1W3
Phone: (905) 681-9292
800-668-3199
FAX: (905) 681-9444

Mexico

Endress+Hauser
Paseo del Pedregal No. 610
Col. Jardines del Pedregal
01900, Mexico D.F.
Mexico
Phone: (525) 568-2405
FAX: (525) 568-7459

Endress+Hauser
The Power of Know How

